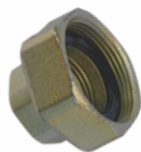




## Wilo-TOP-S

Tip	Racorduri Rp	Diametru nominal flansa	Clasa EEI	Lungime lo mm	Presiune nominala PN/bar	Alimentare	Greutate bruta M/kg	Cod
Top – S 25/5	1	-	D	180	10	1~230V,50Hz	4.4	28200
Top – S 25/5	1	-	D	180	10	3~400V,50Hz	4.6	PBC
Top – S 25/7	1	-	D	180	10	1~230V,50Hz	5.3	28210
Top – S 25/7	1	-	D	180	10	3~400V,50Hz	5.3	PBC
Top – S 25/10	1	-	D	180	10	1~230V,50Hz	7.1	PBC
Top – S 25/10	1	-	D	180	10	3~400V,50Hz	7.0	PBC
Top – S 25/13	1	-	F	180	10	1~230V,50Hz	5.5	PBC
Top – S 25/13	1	-	F	180	10	3~400V,50Hz	5.5	PBC
Top – S 30/4	1 1/4	-	D	180	10	1~230V,50Hz	5.1	28220
Top – S 30/4	1 1/4	-	D	180	10	3~400V,50Hz	5.1	PBC
Top – S 30/5	1 1/4	-	D	180	10	1~230V,50Hz	4.6	28230
Top – S 30/5	1 1/4	-	D	180	10	3~400V,50Hz	4.7	PBC
Top – S 30/7	1 1/4	-	D	180	10	1~230V,50Hz	5.5	28240
Top – S 30/7	1 1/4	-	D	180	10	3~400V,50Hz	5.6	PBC
Top – S 30/10	1 1/4	-	D	180	10	1~230V,50Hz	7.2	28250
Top – S 30/10	1 1/4	-	D	180	10	3~400V,50Hz	7.2	PBC
Top – S 40/4	-	40	D	220	6/10	1~230V,50Hz	10.4	28260
Top – S 40/4	-	40	D	220	6/10	3~400V,50Hz	10.6	PBC
Top – S 40/7	-	40	D	250	6/10	1~230V,50Hz	12.4	28265
Top – S 40/7	-	40	C	250	6/10	3~400V,50Hz	12.5	PBC
Top – S 40/10	-	40	D	250	6/10	1~230V,50Hz	15.5	28261
Top – S 40/10	-	40	C	250	6/10	3~400V,50Hz	16.0	PBC
Top – S 40/15	-	40	D	250	6/10	1~230V,50Hz	22.6	PBC
Top – S 40/15	-	40	D	250	6/10	3~400V,50Hz	22.5	PBC
Top – S 50/4	-	50	D	240	6/10	1~230V,50Hz	13.9	28263
Top – S 50/4	-	50	D	240	6/10	3~400V,50Hz	14.0	PBC
Top – S 50/7	-	50	C	280	6/10	1~230V,50Hz	17.0	28262
Top – S 50/7	-	50	C	280	6/10	3~400V,50Hz	17.8	PBC
Top – S 50/10	-	50	C	280	6/10	1~230V,50Hz	19.0	28254
Top – S 50/10	-	50	C	280	6/10	3~400V,50Hz	19.0	PBC
Top – S 50/15	-	50	C	340	6/10	3~400V,50Hz	26.8	PBC
Top – S 65/7	-	65	C	280	6/10	1~230V,50Hz	20.5	28255
Top – S 65/7	-	65	C	280	6/10	3~400V,50Hz	19.5	PBC
Top – S 65/10	-	65	C	340	6/10	1~230V,50Hz	22.4	28253
Top – S 65/10	-	65	C	340	6/10	3~400V,50Hz	23.3	PBC
Top – S 65/13	-	65	C	340	6/10	3~400V,50Hz	29.4	PBC
Top – S 65/15	-	65	C	340	6/10	3~400V,50Hz	31.0	PBC
Top – S 80/7	-	80	C	360	6	1~230V,50Hz	26.5	28264
Top – S 80/7	-	80	C	360	6	3~400V,50Hz	25.0	PBC
Top – S 80/7	-	80	C	360	10	3~400V,50Hz	26.4	PBC
Top – S 80/10	-	80	C	360	6	3~400V,50Hz	33.9	28355
Top – S 80/10	-	80	C	360	10	3~400V,50Hz	33.3	PBC
Top – S 80/15	-	80	C	360	6	3~400V,50Hz	45.7	PBC
Top – S 80/15	-	80	C	360	10	3~400V,50Hz	45.7	PBC
Top – S 80/20	-	80	C	360	6	3~400V,50Hz	48.9	PBC
Top – S 80/20	-	80	C	360	10	3~400V,50Hz	48.9	PBC
Top – S 100/10	-	100	C	360	6	3~400V,50Hz	36.9	28266
Top – S 100/10	-	100	C	360	10	3~400V,50Hz	36.9	PBC

Racord olandez  
pompa Wilo

Dimensiune	Cod
1"x1" 1/2	28360
1"1/4x 2"	28370